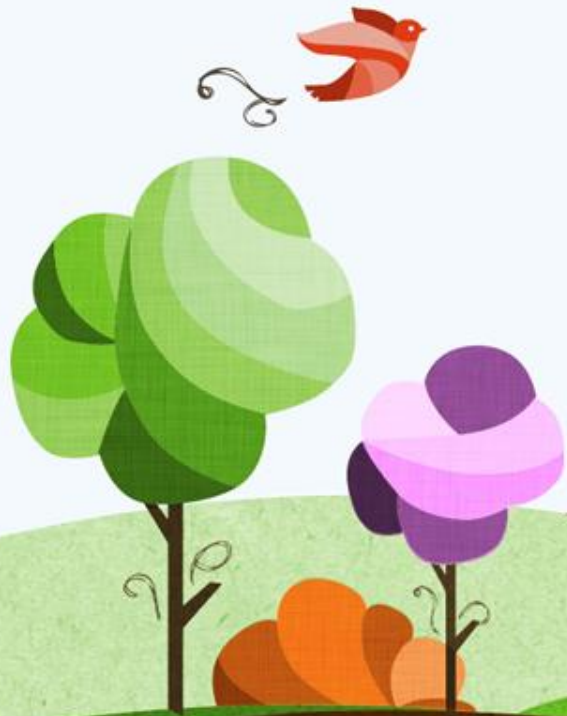


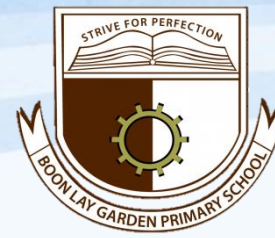
**Boon Lay Garden
Primary School**

The Garden Where Diversity Blossoms



Primary 1
School Parent Meeting
Mathematics Department
2 Jan 2018

Presentation Outline



**Boon Lay Garden
Primary School**

Mathematics
Curriculum

Mathematics
Department Overview

Collaboration with
Parents

Primary Mathematics Syllabus



Boon Lay Garden
Primary School

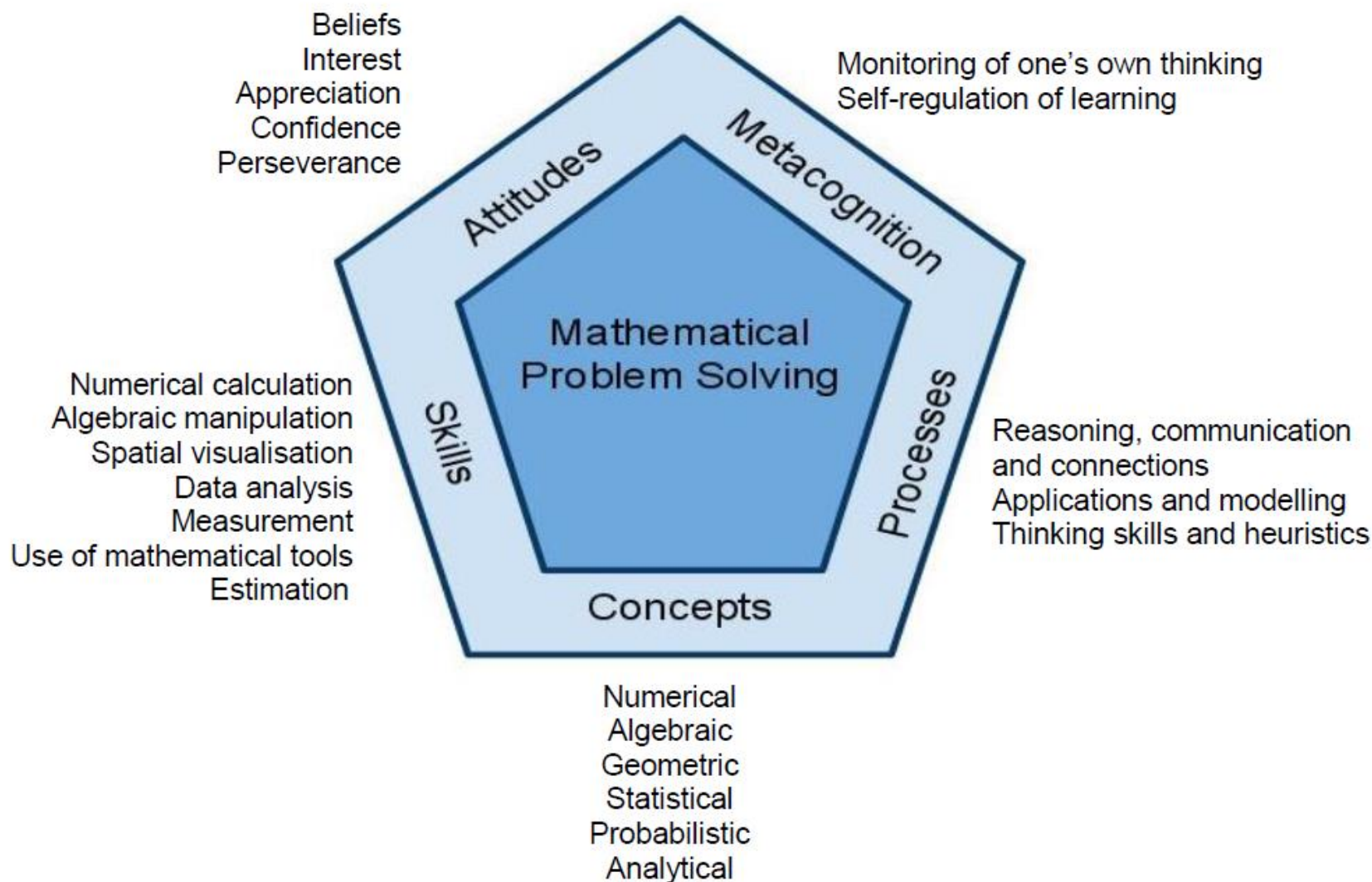
The Primary Mathematics Syllabus aims to enable all students to:

- acquire mathematical concepts and skills for everyday use and continuous learning in mathematics;
- develop thinking, reasoning, communication, application and metacognitive skills through a mathematical approach to problem-solving;
- build confidence and foster interest in mathematics.

Mathematics Framework



Boon Lay Garden
Primary School



Mathematics Department



Boon Lay Garden
Primary School

VISION

Eager Achievers.

Resilient Solvers.

Passionate Thinkers.

MISSION

MAke Things
Happen



Mathematics Department



**Boon Lay Garden
Primary School**

- **Mathematics Modelling** to solve real-world problems with Mathematics
- **Learning Experiences** to develop Mathematical processes and skills
- **Love for Mathematics** through games and a variety of activities



**Boon Lay Garden
Primary School**

Primary 1 Mathematics

NUMBERS AND ALGEBRA

Numbers up to 100
Addition & Subtraction
Multiplication & Division
Money

MEASUREMENT AND GEOMETRY

Length
Time
2D shapes

STATISTICS

Picture Graphs

Assessment



**Boon Lay Garden
Primary School**

- Bite-Size Assessments throughout the year
- Weighted assessments from Term 2
- Assessment information will be included in termly letters to parents

Learning Support for Mathematics



**Boon Lay Garden
Primary School**

2-year resource-
based support

Assessed over a
few days in
January

Extra support for
pupils who attain
levels 0 to 2

Cognition /
Metacognition /
Motivation/
Environment

Mathematics E-learning Portal



Boon Lay Garden
Primary School

MonsWorld

A Math e-learning portal kids truly like

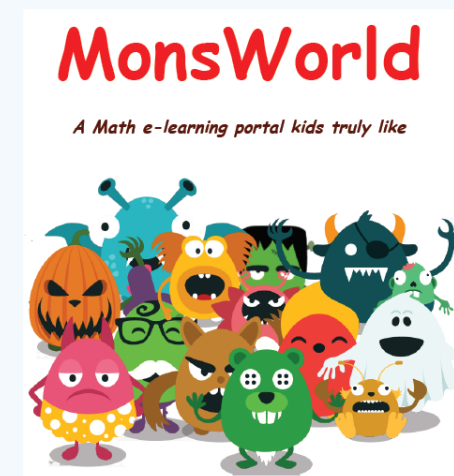


E-learning Portal (Monsworld)



**Boon Lay Garden
Primary School**

- Foster interest and motivation in Mathematics
- Self-directed learning
- Formative assessment
- Details of students' account will be provided in Week 2



Collaboration with Parents



**Boon Lay Garden
Primary School**

Mathematics is
Everywhere!

Factual
Fluency

- Number bonds
- Addition & Subtraction

Encourage
and support



**Boon Lay Garden
Primary School**

The Garden Where Diversity Blossoms

Thank you!

yeo_yong_heng_peter@moe.edu.sg

